

Nameless

A characterful yacht from Mondo Marine that reflects the owner's passion for art, design and light-filled guest spaces

Photography | Alberto Cocchi / Stefano Ricci



*“Each outside area of the yacht conveys a very **DISTINCTIVE** atmosphere”*



Left: The sundeck is cosy and yet gives guests plenty of options.
Above right: The beautifully tiled hot-tub has been reconfigured since this photo, but was created by the same craftsmen at the Chini house.

Some owners are more engaged during the build process than others. For the owner of *Nameless*, the 41-metre Mondo Marine yacht which launched last year, that meant a trip to the yard in Savona an average of once a week. It helped that he lived within commuting distance, but even so it shows how much of an emotional investment this project has been.

And what that commitment has produced is a very particular yacht – she might be called *Nameless*, but she’s no certainly no wallflower. In fact, you’d have to go a long way to find a 40-metre yacht that is so characterful. The most striking thing about the interior, designed by Luca Dini, is the lightness of tone throughout, with just a few darker materials used as accents. The floors in the main salon and upper lounges are in a cool white stone, as is the floor in the master cabin, forward on the main deck. “This is something you don’t see very often on a yacht!” points out Luca Dini, with some glee.

When we first saw *Nameless* she was moored stern-to, and with slab-sided yachts either side it was hard to truly appreciate how luminescent the white marble floors, the white ceilings, the white sofas, and the mirrored steel inset mouldings will appear on a sunny afternoon at anchor, with reflections bouncing around the space. The interior of *Nameless* seems to glow; there aren’t many main salons in which you’ll need sunglasses.

The owner’s passion for marble and onyx is obvious, and he gave instructions to Mondo Marine to source clear, veinless, uniform stone as much as possible: lines, knots and blemishes were off limits. He was also very specific about his preferred supplier of custom-made fabrics. “All silks and many of the fabrics such as cushions and curtains were made by Antico Setificio Fiorentino, and were given their finishing using a loom from the 1700s,” says Luca Dini. This much-loved house of craftsmen was founded in the 18th Century and recent engagements have included restoration work for



“The ARTWORKS were chosen by the owner to add strokes of BRIGHT colour”

the Kremlin Palace and the Villa Medici in Rome. They bring a touch of eclectic elegance and a sense of contrast to the interior.

For the owner, the choice of interior designer was based on a long spell of research. “I have been followed by the client for a while since he had already seen some of my work, and after this he decided to contact me directly,” says Luca Dini. Specifically, he’d seen Luca Dini’s interior for *Sea Force One*, a 54-metre Admiral Mariotti Yacht launched in 2009. That interior was an example of unshackled creativity to meet the owner’s brief for something utterly unique. “The owner of *Nameless* was impressed with it, even if it was something very different to his own liking. When he decided to build his 41-metre he wanted me involved from the very beginning,” says Luca Dini.

In creating something for a new client, Luca Dini’s first job was to get to know the owner’s tastes. “I talked to him a great deal and we spent a lot of time together, so I had the chance to get to know him and learn about

his lifestyle and general preferences. The owner did not want an interior style that could be so easily labelled – he didn’t want something that could simply be defined as ‘minimalist’, ‘contemporary’, or ‘classic’. But he was looking for something well suited to express neatness in design, as well as elegance, and something that incorporated a high level of customisation. This is the reason why so many special and precious materials were selected for use on *Nameless*. Another aspect that was very important to him was the hand-crafted quality of everything.” There is also a strong ‘made in Italy’ theme throughout the yacht.

There is one thing that interrupts the pristine brilliance of the predominantly white ambience inside – vivid flashes of colour that come from the owner’s own collection of contemporary abstract painting that he sourced specifically for the yacht or picked from his own collection. “These works of art were envisioned by the owner, and had my full approval, not only to enrich the rooms in which they are placed, but also



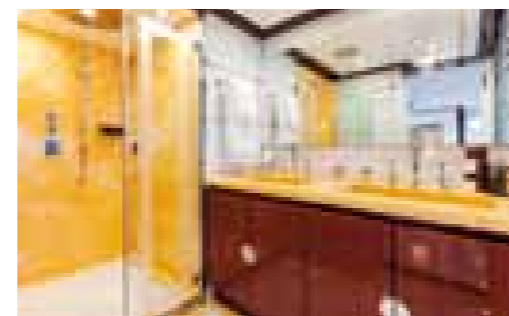
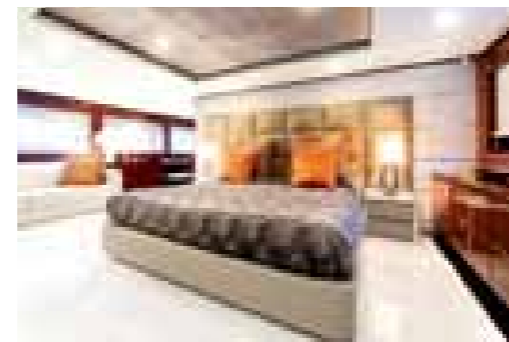
Above: Big windows in the sky lounge mean the eye can feast on the wonderful play of light and reflections.
Top left: The sky lounge seamlessly blends outside and in.
Left: The onyx-topped dining table outside is designed by Luca Dini and is the perfect spot for alfresco dining.
Right: An awning can give the dining area on sunny afternoons.



The owner's PASSION for marble and onyx is clear. The spaces on board GLOW



Above: Abstract artworks either side lead you into the main salon. The Carrara marble floor sets the tone, while edging in mahogany adds a point of contrast.
Right: Customised plates and Baccarat crystal decorate the main dining table. The mirrored wall creates further depth.
Facing page, bottom right: Illuminated onyx in the main salon.
Top right: The aft deck is a relaxing space for guests.
Right, middle: Bed linen in the owner's suite is by Antico Setificio Fiorentino.
Right, below: Onyx in the owner's bathroom was sourced from Iran and is the last cut of its type. The veins in the stone have been cleverly matched from section to section.



to add strokes of bright colour over the prevailing white that is spread across walls, floors and ceilings," says Luca Dini. "It's a brave choice, for sure, but it's one that shows the versatile personality of the owner himself."

Mondo Marine's semi-displacement, all-aluminium platform for *Nameless*, with Cor D. Rover's exterior styling, has been seen before, but the yacht's striking black hull and brilliant white interior make this an example with stand-out charm. It's a new era for Mondo Marine itself, with a takeover last year, ongoing development of the facilities at the yard, and a new sales office established in Monaco in April of this year. Yachts in build include a 60-metre designed by Luca Dini and a 50-metre from the board of Hot Lab.

The fore and aft cabins on *Nameless*'s lower deck are VIPs across the full beam, with a double and twin for the two cabins between – a solution specified by the owner, and something different from previous incarnations of this platform. Each of the VIPs has a huge amount of storage (the forward cabin in

particular), and the big windows bring in plenty of light, while there is also room for a two-person sofa – a great spot to loaf with a book, and the sort of space you don't expect in the guest cabin of a yacht of this size. There's an added pullman in the twin, making *Nameless* a flexible charter choice for family parties. The floors of the guest areas are still white, but in lacquered wood rather than marble. Again, carefully placed artworks add a searing splash of visual interest, and there are some variations in the colours of the bedding. Generally, though, the guest suites take their design cues from the master suite, with onyx in the ensuites, mirrored stainless insets around the walls, and leather-padded bedheads.

The crew have been with the owner for a long time, and the owner insisted that the crew areas benefited from the same leather, mahogany and stainless as the guest area. Early cruising experiences have been positive, with the semi-displacement hull and twin MTUs delivering 18.8 knots – all that marble hasn't had



With BIG windows and PLENTY of wardrobe space, the cabins suit charter parties

too much of an effect on the top speed. "She is great in rough seas and around the harbour she handles like a 20 metre!" says Captain Salvatore Cienzo.

There have been some changes on the sundeck since the photographs you see here were taken last summer when *Nameless* was on her maiden cruise off Sardinia. The wonderful hot-tub with its circulating water fountain has been changed. The new hot-tub has been created with the same hand-made ceramic mosaic covering the whole pool, custom-made by the venerable Florentine furnace Chini, and it's still spacious and a great place for guests to hang out, though set lower down than the initial solution.

Although it's a shorter sundeck than the one on *Manifiq*, a 40-metre Mondo Marine launched in 2010 (also featuring an interior by Luca Dini), it's still a sociable place – capable of entertaining a party of 60 in harbour, and of accommodating all the guests on charter, with sunbathing around the hot-tub, a bar to starboard and recliners aft. You won't be short of

options here. Indeed, all the external spaces allow scope for a charter party to gather as a social group or escape for some privacy. "A feature of the yacht I find quite interesting is that all external deck areas are different from each other, as regards both materials and colours," says Luca Dini. "Each area conveys a very distinctive atmosphere." All the sociability and interaction is on the sundeck, with a more formal vibe on the bridge deck with its onyx-topped dining table, and there's a very relaxed main deck space aft, offering comfortable, high-backed seats as well as a table.

The future looks bright for *Nameless*. As we went to press at the start of June, the yacht was back in Monaco after a trip to the Monaco Grand Prix, and a first, successful charter of the season (she's on central agency with Camper & Nicholsons International), with many more weeks on the water planned for the summer – a mixture of private cruising with the owner and family on board and charters. *Nameless* she may be; anonymous she is not. **SYW**



Above: The forward of the two VIPs. Both have excellent storage.
Facing page, left: The guest cabins have more flashes of colour than the main accommodation areas but retain the keynote styling themes.
Far left: The midships double to starboard. All the guest areas benefit from big windows.
Left: There is space in both VIP cabins for a useful seating area.
Facing page, top left: The stairs to the guest areas are discreetly lit.

THE SPECS *Nameless*

Length overall 41.10m (134ft 7in)
 Beam 8.48m (27ft 9in)
 Draught 2.30m (7ft 6in)
 Engines Twin 1,630kW (2,185hp) MTU 16V2000 M84
 Berths Owner: 2. Guests: 10. Crew: 8.
 Gross tonnage 284 gross tons
 Hull/superstructure Aluminium
 Naval architecture Mondo Marine Engineering

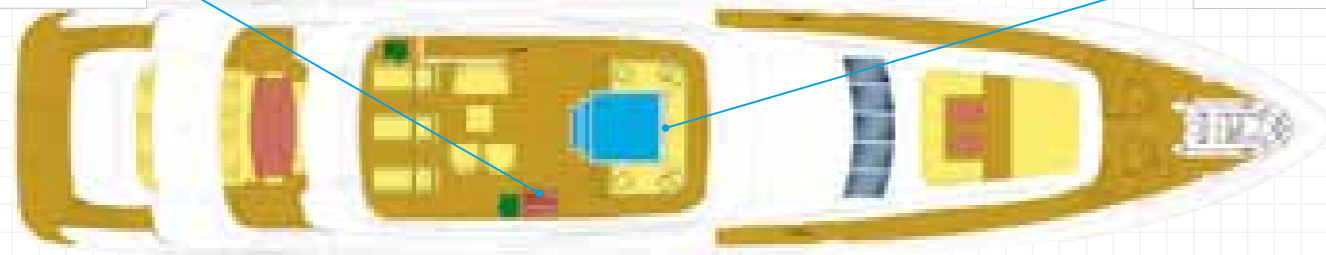
Exterior Cor D. Rover
 Interior Luca Dini Design
 Classification RINA C+ Hull Mach, Y, Unrestricted

PERFORMANCE NOTES
 Top speed 19 knots
 Cruising speed 17 knots
 Range @ 12 knots 3,000 nautical miles

BUILDER/CHARTER
 Builder Mondo Marine, 6, Lungomare Matteotti,
 17100 Savona, Italy. Email: info@mondosmarinemc.mc
 Website: www.mondosmarinemc.it
 Charter Camper & Nicholson's International. Céline
 Laffin. Email: claffin@camperandnicholsons.com
 Website: www.camperandnicholsons.com
 Charter rate: €145,000pw

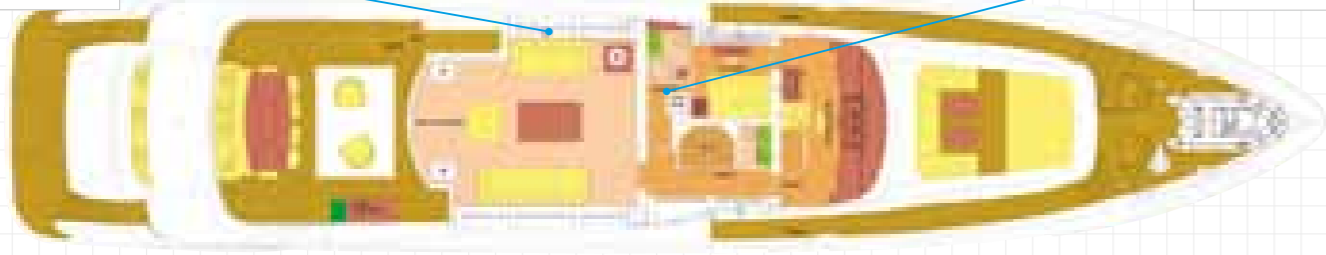
SUNDECK: A dedicated unit with a fridge, TV and icemaker.

HOT-TUB: The area has been reconfigured in recent months.



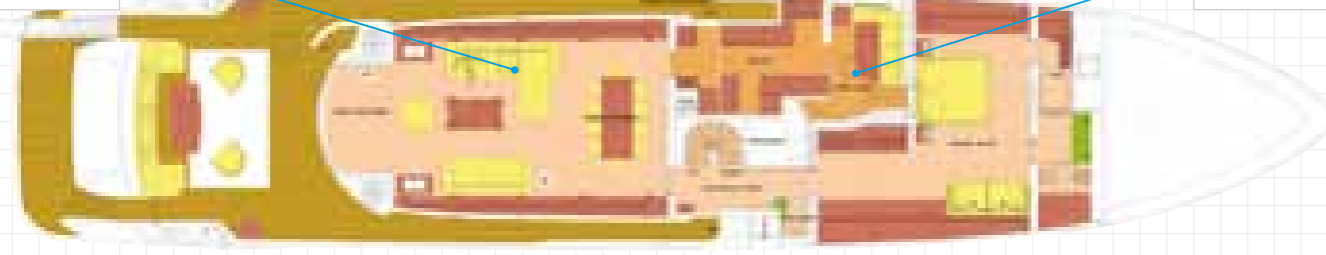
SKY LOUNGE: A TV turns the bridge deck lounge into a media area.

BRIDGE DECK: A pantry for serving guests in the lounge and on deck.



MAIN SALON: Sofas and seating were custom designed by Luca Dini.

CREW MESS: A deck up from the crew cabins and close to the galley.



GARAGE: Holding the yacht's 9-metre jet-RIB, plus toys and dive gear.

CREW AREAS: There is no access directly to the guest suites from here.



FOLD-DOWN SWIM PLATFORM: Useful for when the toys are out.

AWNINGS: Used to shade the sundeck and bridge deck after areas.

TOP SPEED: A capable 19 knots and a cruising speed of 17 knots.

SUNDECK: Gym equipment has been placed here for the summer charter season.

OWNER'S SUITE: There's no office but there are expansive storage spaces.

HULL COLOUR: There's a black hull and a hint of grey in the superstructure.

FORWARD HIDEAWAY: A nicely secluded area for guests to escape to.

RESCUE TENDER: A dedicated crane for the yacht's 5.8-metre RIB.

